

RIFLEX CABLE HO7RN-F

LOW VOLTAGE 450/750 V



Power and flexibility to the limit.

Based on : EN-50525-2-21

DESIGN

Conductor

Electrolytic copper, class 5 or 6 (flexible), based on EN 60228

Insulation

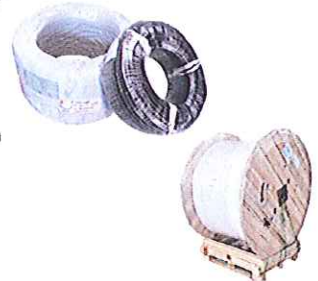
Thermosetting rubber (type E14).

The standard identification is the following:

- 1X..... Natural
- 2X..... Brown Blue
- 3G..... Brown Blue Yellow/green
- 4G..... Brown Black Grey Yellow/green
- 5G..... Brown Black Grey Blue Yellow/green
- 6G.or more ---- Black numbered Yellow/Green

Packaging

Available in rolls and coils

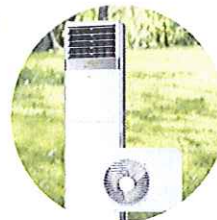


Outer sheath

Thermosetting rubber (type EM2). Black colour.

APPLICATIONS

HO7RN-F is a rubber flexible power cable specifically designed to operate in tough weather conditions and under high mechanical and thermal stresses. The hard-wearing HO7RN-F cable is made up of class 5 flexible plain copper conductors, EPR (Ethylene Propylene Rubber) insulation and a black CPE sheath. With its oil, grease and water resistant sheath, HO7RN-F cable is suitable for use in a whole range of different applications, including handling equipment, mobile power supplies and stage and audio visual equipment.



CHARACTERISTICS

INSTALLATION CONDITIONS



Flexible Conductor
Class 5/6



Outdoor Installation



Max Service
Temperature: 60°C



Abrasion
Resistance



Flame Non-propagation



Meter by Meter
Marking



Anti-twist Resistant



Max Short-circuit
Temperature:
250°C (Max. 5 s)



Min Bending Radius
5 ~ 6 Cable Diameter



Min Service
Temperature:
-40°C(Fixed)



Heavy Mobile Use



Industrial Use



Chemical & Oil
Resistance



Robotics



Reach



H07RN-F Dimensions

NO	Cross Section (mm ²)	Diameter (mm)	Weight (Kg/Km)	The Max copper Conductor D.C. resistance at 20°C	The Min bend radius	Fixed Installation 30°C (A)	Mobile Service 30°C (A)	Voltage Drop (V·Km)
1	1×1.5	6.0	59	13.3	6D	21	14	279.3
2	1×2.5	6.6	71	7.98	6D	37	25	295.3
3	1×4	7.7	106	4.95	6D	47	32	232.7
4	1×6	8.5	134	3.3	6D	52	36	171.6
5	1×10	9.9	197	1.91	6D	75	52	143.3
6	1×16	11.4	273	1.21	6D	112	78	135.5
7	1×25	13.2	383	0.78	6D	148	103	115.4
8	1×35	14.7	503	0.554	6D	183	128	101.4
9	1×50	17.1	695	0.386	6D	226	158	87.2
10	1×70	19.5	931	0.272	6D	289	202	78.6
11	1×95	21.8	1214	0.206	6D	353	247	72.7
12	1×120	23.7	1490	0.161	6D	415	290	66.8
13	1×150	25.9	1830	0.129	6D	460	322	59.3
14	1×185	28.5	2216	0.106	6D	480	336	50.9
15	1×240	32.0	2832	0.0801	6D	529	370	42.4
16	1×300	34.9	3456	0.0641	6D	580	406	37.2
17	1×400	38.9	4440	0.0486	6D	823	576	40.0
18	1×500	45.9	5668	0.0384	6D	946	662	36.3
19	1×630	51.4	7324	0.0287	6D	1050	735	30.1
20	2×1	8.3	101	19.5	6D	17	11	331.5
21	2×1.5	9.3	129	13.3	6D	21	14	279.3
22	2×2.5	11.0	185	7.98	6D	30	21	239.4
23	2×4	12.6	254	4.95	6D	39	27	193.1
24	2×6	14.2	334	3.3	6D	51	35	168.3
25	2×10	19.4	545	1.91	6D	74	51	141.3
26	2×16	22.4	739	1.21	6D	98	68	118.6
27	2×25	26.2	1028	0.78	6D	135	94	105.3
28	2×35	28.8	1303	0.554	6D	167	116	92.5
29	2×50	33.6	1783	0.386	6D	208	145	80.3
30	2×70	38.4	2369	0.272	6D	259	181	70.4
31	2×95	43.0	3023	0.206	6D	318	222	65.5
32	3×1	8.9	122	19.5	6D	14	9	273.0
33	3×1.5	10.0	155	13.3	6D	18	12	239.4
34	3×2.5	11.8	223	7.98	6D	26	18	207.5
35	3×4	13.5	309	4.95	6D	34	23	168.3
36	3×6	15.3	413	3.3	6D	43	30	141.9
37	3×10	20.8	713	1.91	6D	59	41	112.7
38	3×16	24.0	978	1.21	6D	79	55	95.6
39	3×25	28.0	1374	0.78	6D	106	74	82.7
40	3×35	31.0	1773	0.554	6D	131	91	72.6
41	3×50	36.1	2436	0.386	6D	165	115	63.7
42	3×70	41.0	3229	0.272	6D	210	147	57.1
43	3×95	46.1	4160	0.206	6D	256	179	52.7
44	3×120	49.9	5070	0.161	6D	299	209	48.1
45	3×150	54.6	6212	0.129	6D	340	238	43.9
46	3×185	60.1	7544	0.106	6D	396	277	42.0
47	3×240	68.7	9791	0.0801	6D	477	333	38.2
48	3×300	75.7	12001	0.0641	6D	556	389	35.6
49	4×1	9.9	150	19.5	6D	14	9	273.0

The dimensions are for reference only. For further information, please contact with Riflex.

Riflex reserves the right to carry out any modification without further notice.



Reach



H07RN-F Dimensions

NO	Cross Section (mm ²)	Diameter (mm)	Weight (Kg/Km)	The Max copper Conductor D.C. resistance at 20°C	The Min bend radius	Fixed Installation 30°C (A)	Mobile Service 30°C (A)	Voltage Drop (V-Km)
50	4×1.5	11.0	191	13.3	6D	18	12	239.4
51	4×2.5	13.0	275	7.98	6D	26	18	207.5
52	4×4	15.1	386	4.95	6D	34	23	168.3
53	4×6	17.0	517	3.3	6D	43	30	141.9
54	4×10	22.6	885	1.91	6D	59	41	112.7
55	4×16	26.1	1224	1.21	6D	79	55	95.6
56	4×25	31.0	1760	0.78	6D	106	74	82.7
57	4×35	34.3	2275	0.554	6D	131	91	72.6
58	4×50	39.9	3129	0.386	6D	165	115	63.7
59	4×70	45.5	4180	0.272	6D	210	147	57.1
60	4×95	51.5	5434	0.206	6D	256	179	52.7
61	4×120	55.3	6584	0.161	6D	299	209	48.1
62	4×150	60.7	8110	0.129	6D	340	238	43.9
63	4×185	67.0	9837	0.106	6D	396	277	42.0
64	4×240	76.4	12751	0.0801	6D	477	333	38.2
65	4×300	84.3	15713	0.0641	6D	556	389	35.6
66	5×1	10.9	181	19.5	6D	14	9	273.0
67	5×1.5	12.1	230	13.3	6D	18	12	239.4
68	5×2.5	14.3	330	7.98	6D	26	18	207.5
69	5×4	16.7	474	4.95	6D	34	23	168.3
70	5×6	18.9	634	3.3	6D	43	30	141.9
71	5×10	24.8	1074	1.91	6D	59	41	112.7
72	5×16	28.9	1504	1.21	6D	79	55	95.6
73	5×25	34.2	2160	0.78	6D	106	74	82.7
74	5×35	37.6	2773	0.554	6D	131	91	72.6
75	5×50	44.2	3864	0.386	6D	165	115	63.7
76	5×70	50.6	5184	0.272	6D	210	147	57.1
77	5×95	56.9	6694	0.206	6D	256	179	52.7
78	6×1.5	14.3	298	13.3	6D	18	12	239.4
79	7×1.5	14.5	328	13.3	6D	18	12	239.4
80	12×1.5	18.7	521	13.3	6D	15	10	199.5
81	18×1.5	22.2	738	13.3	6D	15	10	199.5
82	24×1.5	25.9	967	13.3	6D	15	10	199.5
83	36×1.5	29.6	1346	13.3	6D	15	10	199.5
84	6×2.5	16.5	408	7.98	6D	26	18	207.5
85	7×2.5	16.7	451	7.98	6D	26	18	207.5
86	12×2.5	21.6	720	7.98	6D	22	15	175.6
87	18×2.5	25.8	1036	7.98	6D	22	15	175.6
88	24×2.5	30.3	1373	7.98	6D	22	15	175.6
89	36×2.5	34.8	1934	7.98	6D	22	15	175.6
90	6×4	19.3	570	4.95	6D	34	23	168.3
91	7×4	19.7	643	4.95	6D	34	23	168.3
92	12×4	25.7	1042	4.95	6D	28	19	138.6
93	18×4	30.6	1495	4.95	6D	28	19	138.6

The dimensions are for reference only. For further information, please contact with Reflex.

Reflex reserves the right to carry out any modification without further notice.